

View Report

Once the dataset and report format have been chosen, the user can view it inside the **EasyAnalyst** application. Tabs are included for a survey description, the survey map, and the selected graph style.

■ Survey Description tab

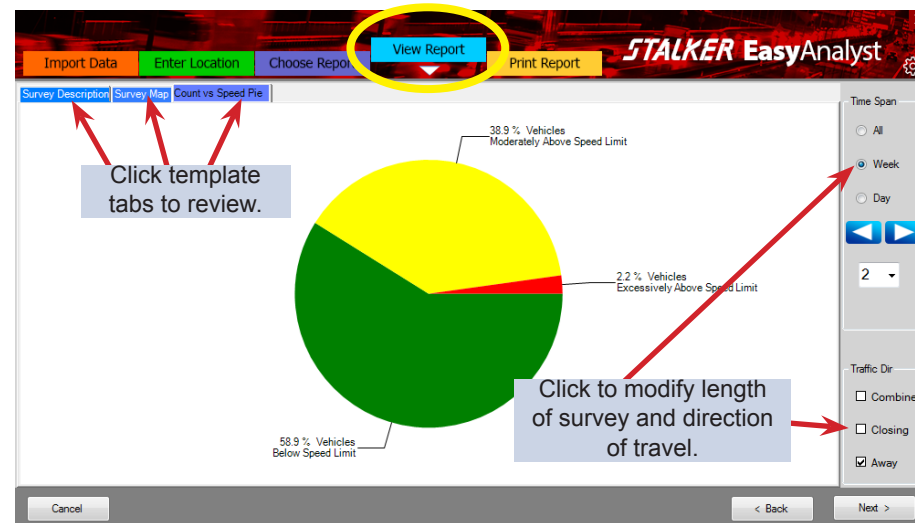
A description of the survey, based on the input from the **Enter Location** tab, is created. It contains Survey Location, Survey Dates, Traffic Zone, File Name, Device Serial Number, Traffic Direction, Device Type, and Survey Note.

■ Survey Map tab

A Google Map is generated that shows the location where the survey data was collected.

■ Formatted Report tab

Then, based on the user's choice of report, a graphic representation of the data is rendered.



Print Report

Print Report/Save Report/Export Data to Excel/Save Report Templates – once all the data and any modifications are complete, this tab allows the user to either review then print the reports, save the reports as a PDF file, export the data to Excel, or save the selected report templates to be used later.

■ Print Report

Shows a review of all selected templates in the report prior to printing.

■ Save to PDF

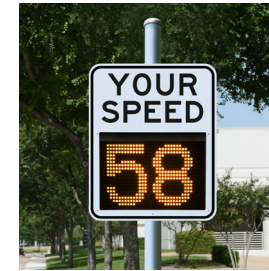
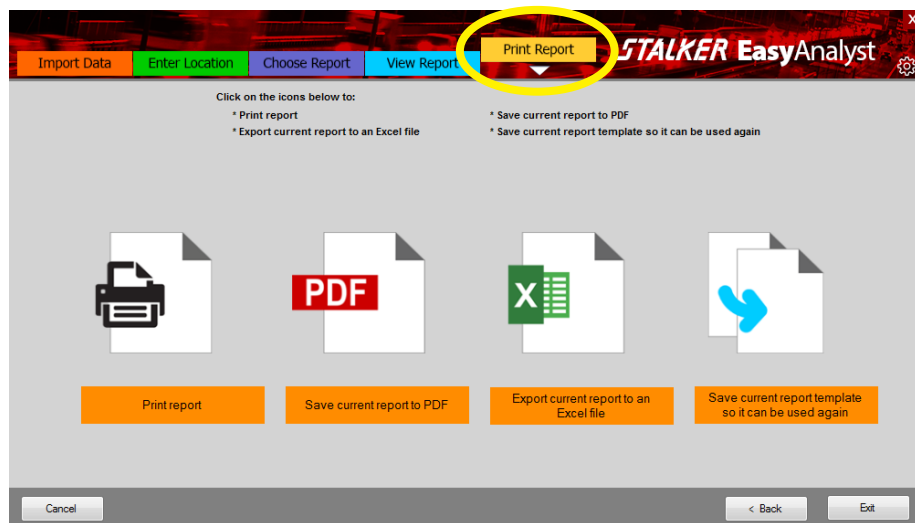
Allows the user to save the current reports in a PDF format. Select drive/file to save data, name report and save.

■ Export to Excel

Exports report to an Excel CSV file.

■ Save to Template

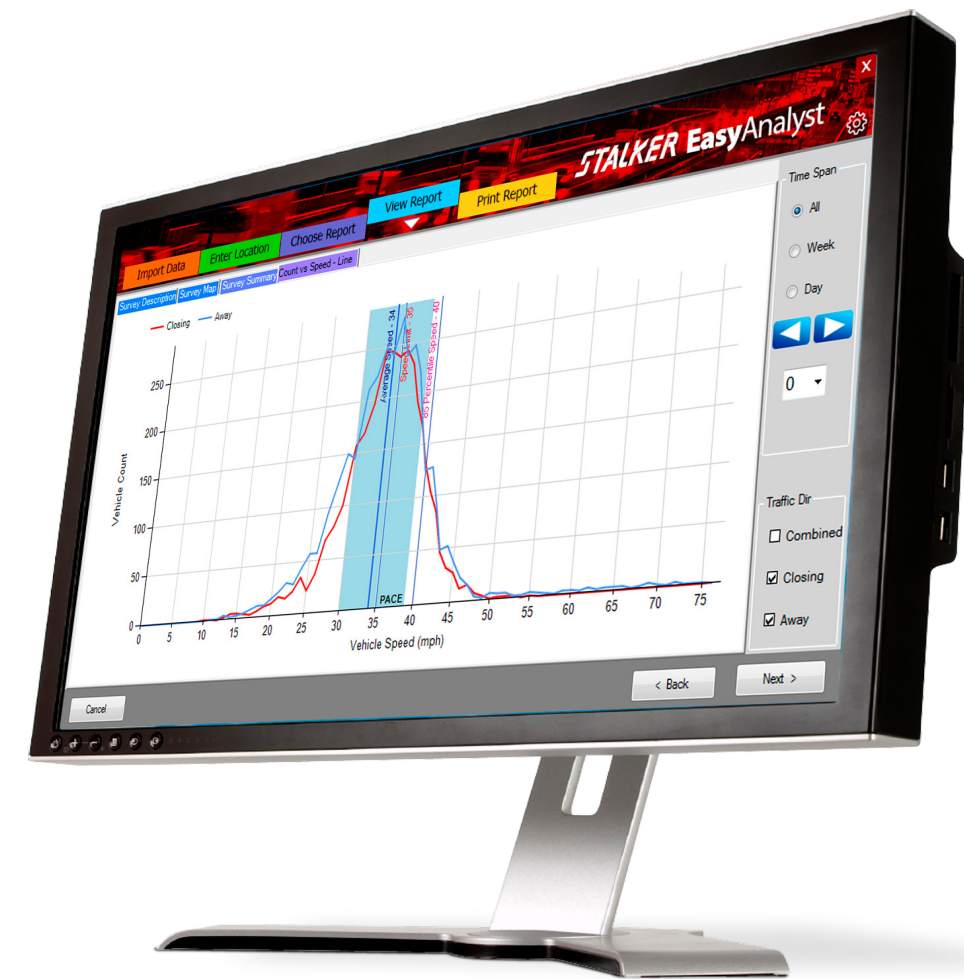
To save created report template(s) for further use, click Save Report Template, then select drive and file, name file and save.



EasyAnalyst | Traffic Data Analysis and Presentation Software

EasyAnalyst™

Traffic Tracking, Analysis, and Reporting



STALKER®

Power to Enforce.

applied concepts, inc.

855 East Collins Boulevard ■ Richardson, Texas 75081
972.398.3780 ■ Fax 972.398.3781



011-0275-00 Rev A

800-STALKER

Copyright © 2018 Applied Concepts, Inc. All Rights Reserved. Specifications are subject to change.

STALKER®

Power to Enforce.

StalkerRadar.com

EasyAnalyst, Stalker Radar's latest traffic analysis application, is by far the easiest to use statistical software package available in the industry.

EasyAnalyst imports its data directly from all statistics-enabled Stalker trailers, sensors, and signs. There's no data conversion or other complicated computer operation. The user just plugs a USB memory stick into any Stalker traffic control device, and the data is automatically downloaded. The USB memory stick is then attached directly to a computer running **EasyAnalyst** and the data is loaded (just like you load a Word or Excel file).

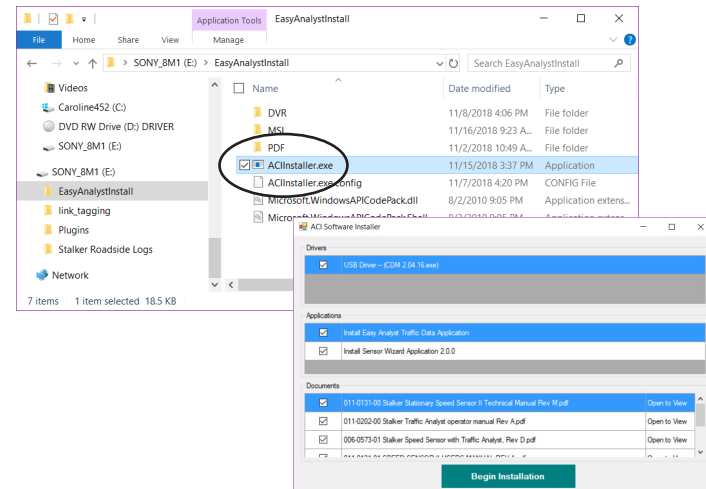
The data is automatically formatted into reports and graphics and can be assembled and saved into templates for later use with other captured traffic data.

And naturally, **EasyAnalyst** is backwards compatible with **Traffic Analyst** reporting, so the user can switch to **Traffic Analyst**'s powerful report composer from inside **EasyAnalyst**.

Installation

Install on local computer

- Insert USB memory stick
- Double click **ACIInstall.exe**
- Follow the Install Wizard
- Approve License Agreement
- Choose Installation Folder
- Confirm Installation
- Launch **EasyAnalyst**



Import Data

Choosing a Dataset

When **EasyAnalyst** is started, it begins with its **Import Data** screen. The user can either load data from a folder on their computer's hard drive or from a USB memory stick.

To load from the computer's hard drive, choose among the data files listed in the grid on the **Import Data** screen.

To load from a USB memory stick, insert the memory stick into an available USB port and click the **File Browser** button. Navigate to the folder containing the data file. Double-click on the desired data file.

Gear Icon

Clicking the gear icon in the upper right shows two options.

Check for Update

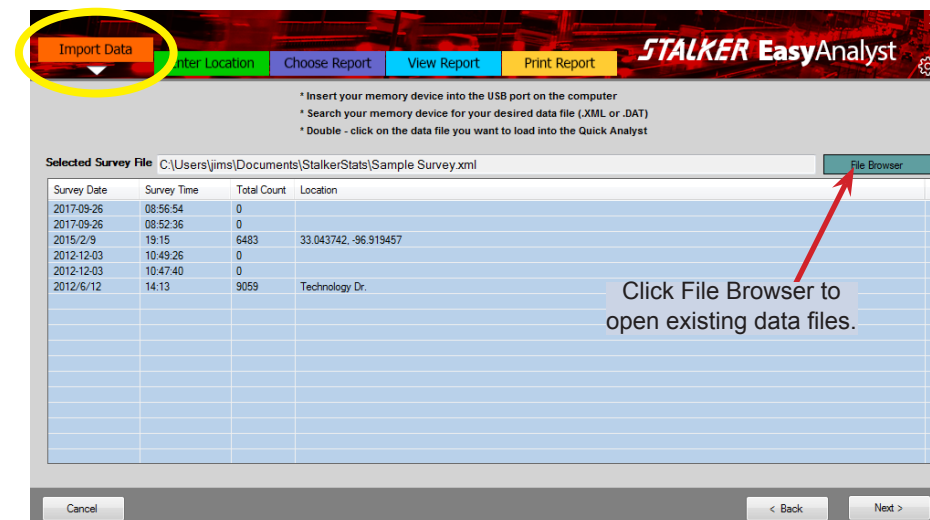
Choosing this option checks for a newer version of **EasyAnalyst**. The current version is listed and **Check**, **Download & Install**, and **Cancel** buttons are available.

About

The **About** option displays version and copyright information.



Back and **Next** buttons load the next or previous tab screen.



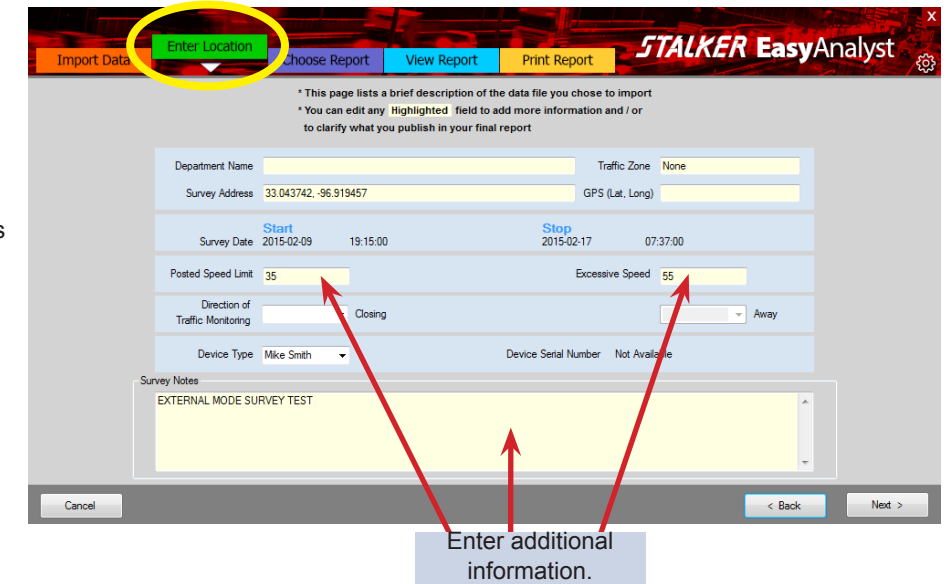
Enter Location

Location Form

Once a data source file is selected in the **Import Data** screen, the active screen changes to **Enter Location**. In this screen the user can add descriptive text to the data's metadata. Editable fields include:

- Department Name
- Traffic Zone
- Survey Address
- GPS (Lat, Long)
- Posted Speed Limit
- Excessive Speed
- Direction of Traffic Monitoring
- Survey Notes

Input is saved when the user navigates to the next tab either by using the **Next** button or selecting the next tab.



Choose Report

EasyAnalyst offers a variety of report formats for the user to choose. From the **Choose Report** tab, the user can select the report of their choice and **EasyAnalyst** automatically formats the report using location data chosen earlier.

Reports available are:

Speed Compliance Report

This pie-chart report details vehicles below the speed limit, vehicles moderately above the speed limit, and vehicles excessively above the speed limit.

Speed Enforcement Report

Based on the traffic data analyzed, this report predicts the best weekdays and times for speed enforcement.

Speed Profile Report

This report analyzes the statistics of the traffic data, including vehicle count, percent over and under limit, 85% percentile, and 10 mph pace.

Traffic Density Report

This report shows the vehicle count by day and unit of time.

Traffic Matrix Report

This report contains elements of the Traffic Density and Speed Profile reports.

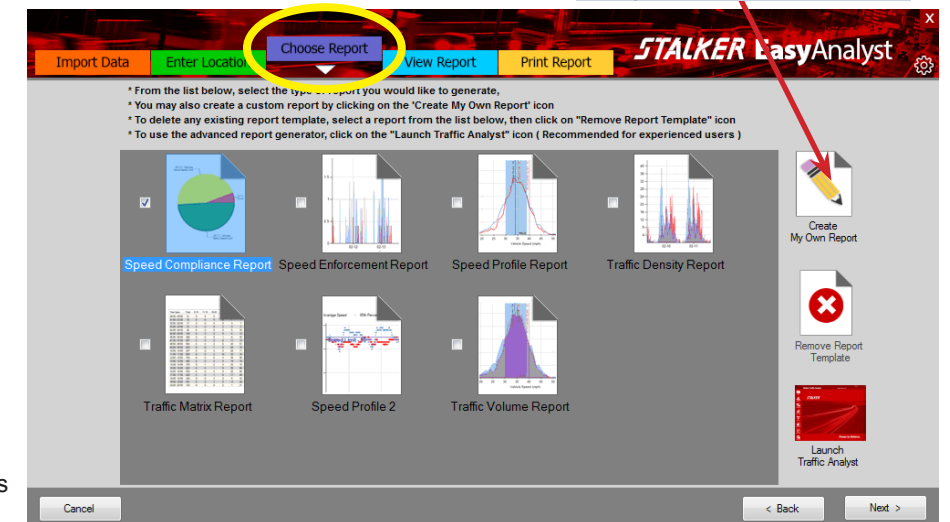
Speed Profile 2

This report includes two charts: Count vs Speed line chart and Speed vs Time point chart.

Traffic Volume Report

This report includes two charts: Count vs Time and Count vs Speed.

Create your own report from any or all of 23 templates.



Create My Own Report

This button allows the user to select from 24 reports to assemble their own combination of reports.

Remove Report Template

This button clears a report created using the **Create My Own Report** function.

Launch Traffic Analyst

For more complex reports and analyses the user can launch **Traffic Analyst**. **Traffic Analyst** allows the user to create more complex reports using its internal report composer.